

Dance of the red minerals P2-P9

Violet at the party P10-P17

Autumn 23  
Winter 24

Aubade time P18-P25

Escapist Blue P26-P33

Admiration for nature P34-P41


Men's collection P42-P49  
Suitable for every occasion

Children Collection P50-P57  
Soft and the creative world

Children Collection P58-P65  
with sea creatures

# CONTENTS



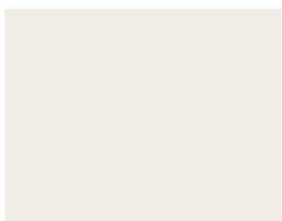
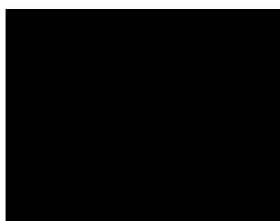


The dance of red mineral tones resonate with newly discovered modest colors.  
This mysterious red evokes the dusty and desolate landscape of Mars and ancient deserts.  
Soft digital images, brushstrokes, and plaid designs are combined with sustainable fabrics.  
This mineral group will capture you for daily wear to party wear.



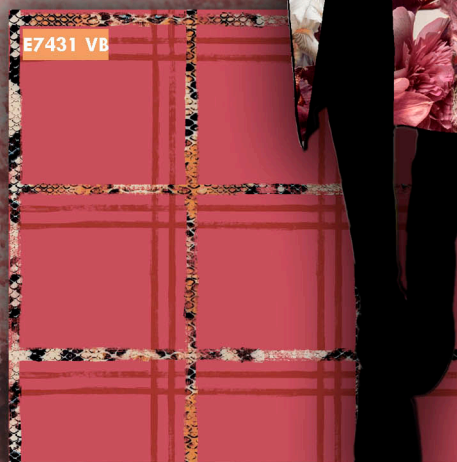
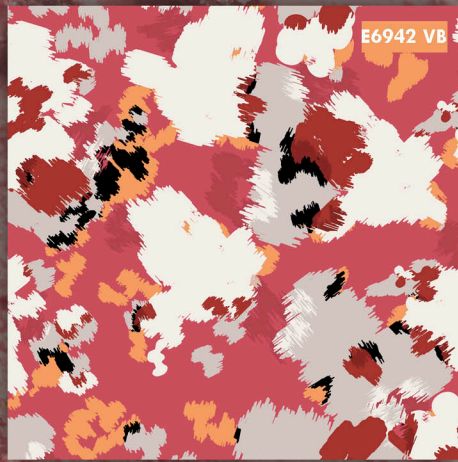
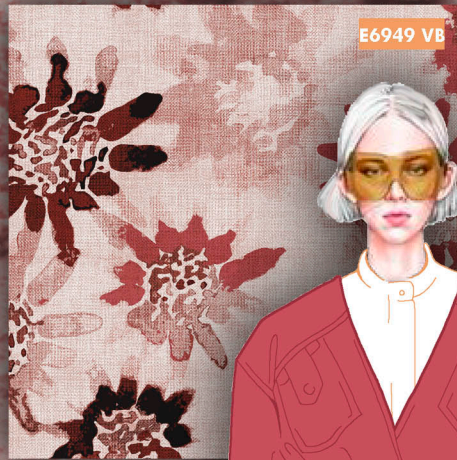


# Dance of the red minerals



A-W  
23-24

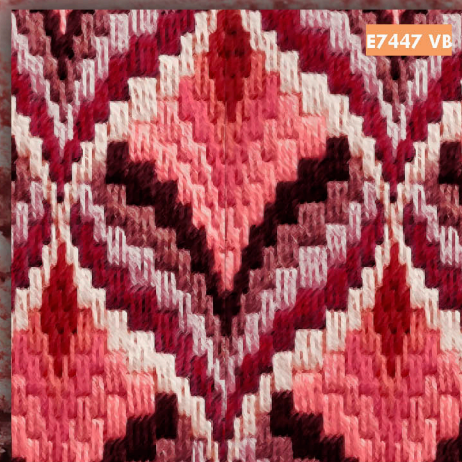
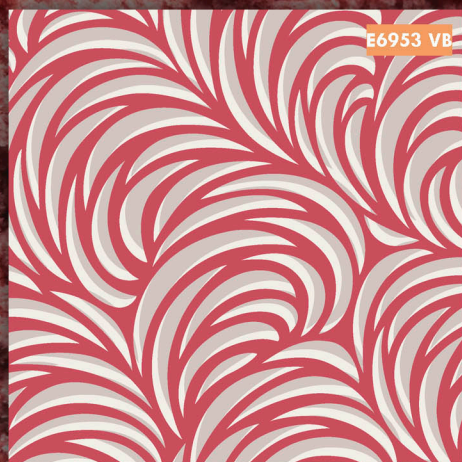
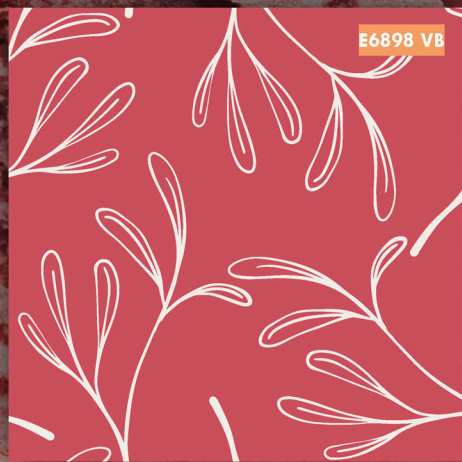




# Dance of the red minerals

A-W  
23-24

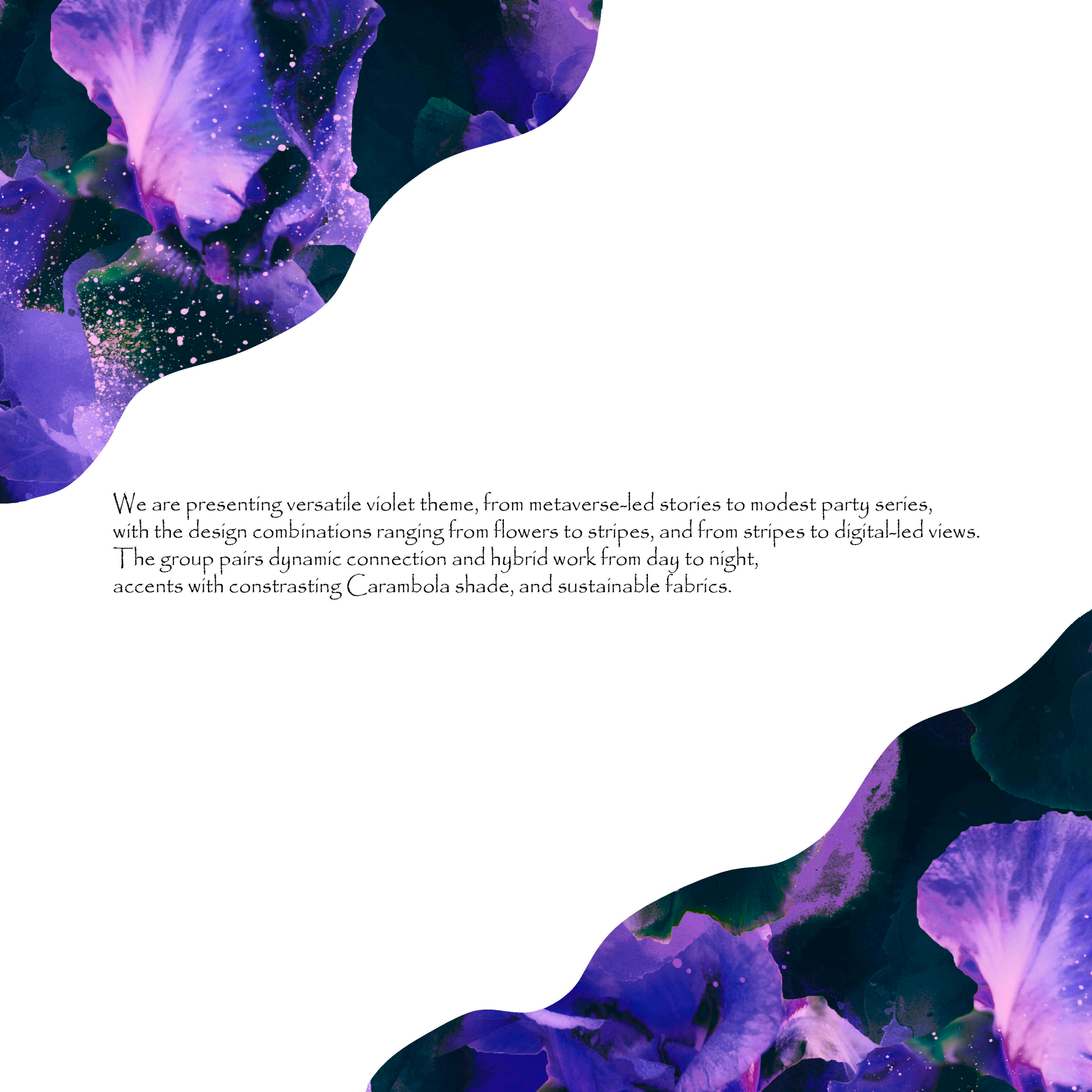




# Dance of the red minerals

A-W  
23-24





We are presenting versatile violet theme, from metaverse-led stories to modest party series, with the design combinations ranging from flowers to stripes, and from stripes to digital-led views. The group pairs dynamic connection and hybrid work from day to night, accents with contrasting Carambola shade, and sustainable fabrics.





*Violet at the party*



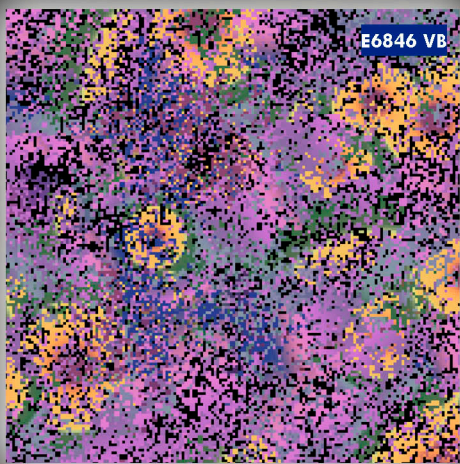
*A-W  
23-24*



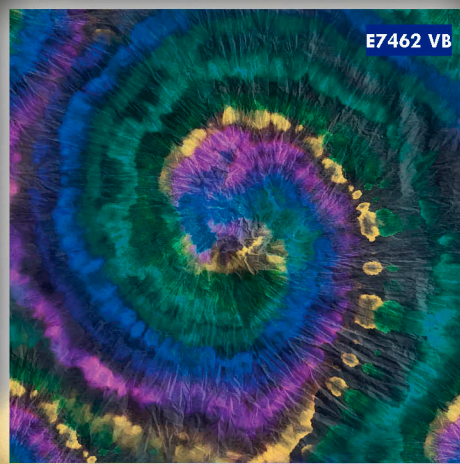
# Violet at the party



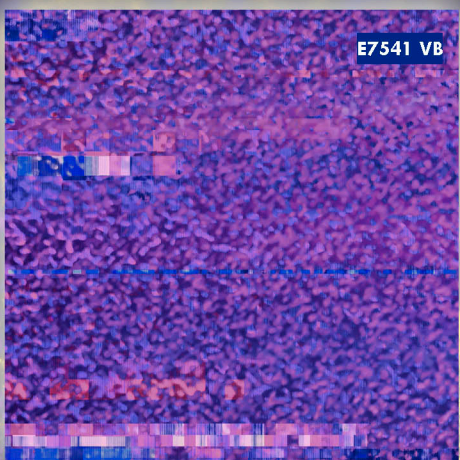
E6870 VB



E6846 VB



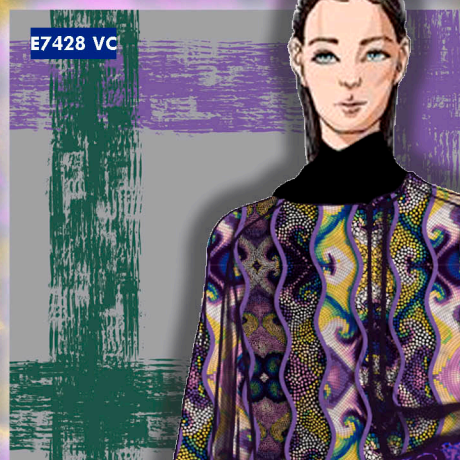
E7462 VB



E7541 VB



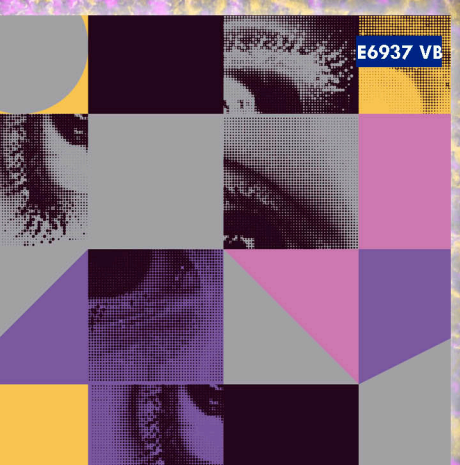
E6997 VB



E7428 VC



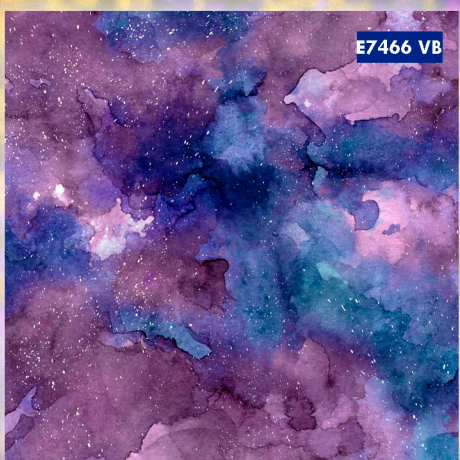
E7461 VB



E6937 VB



E6850 VK



E7466 VB



E7432 VE

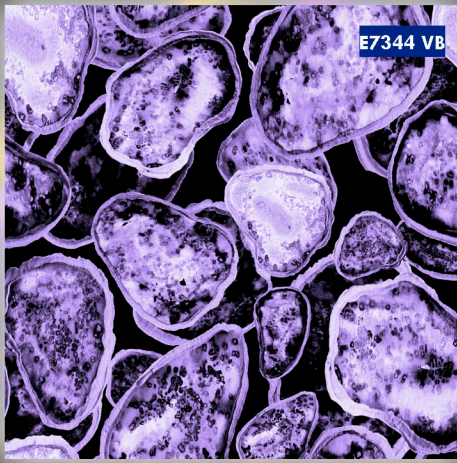


E6936 VD

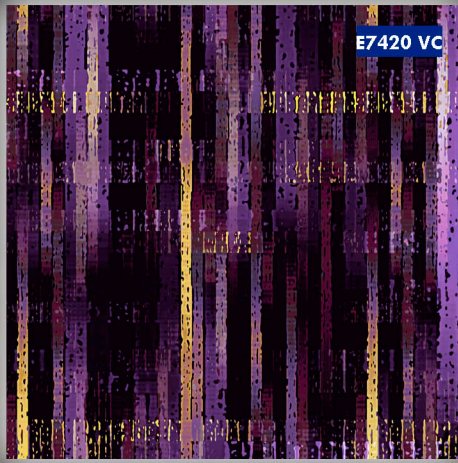


A-W  
23-24

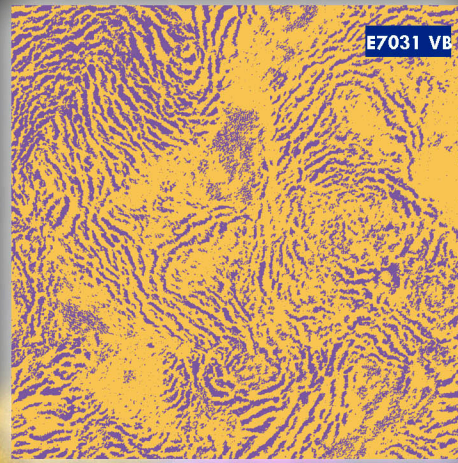




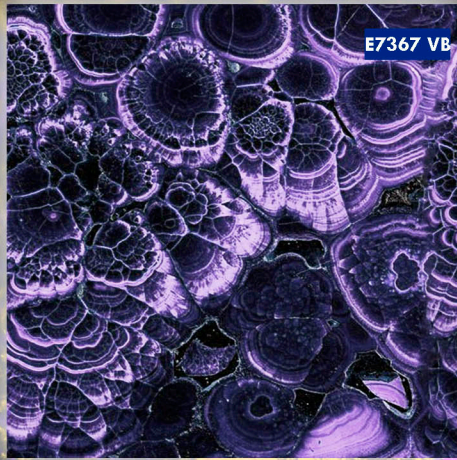
E7344 VB



E7420 VC



E7031 VB



E7367 VB



E7424 VB



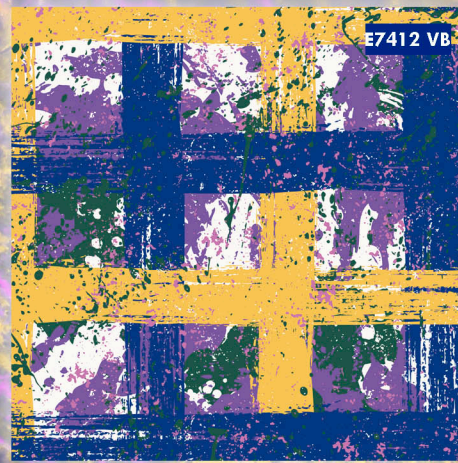
E7181 VB



E7342 VB



E3211 VB



E7412 VB



E7177 VB



E6890 VB




E7454 VB

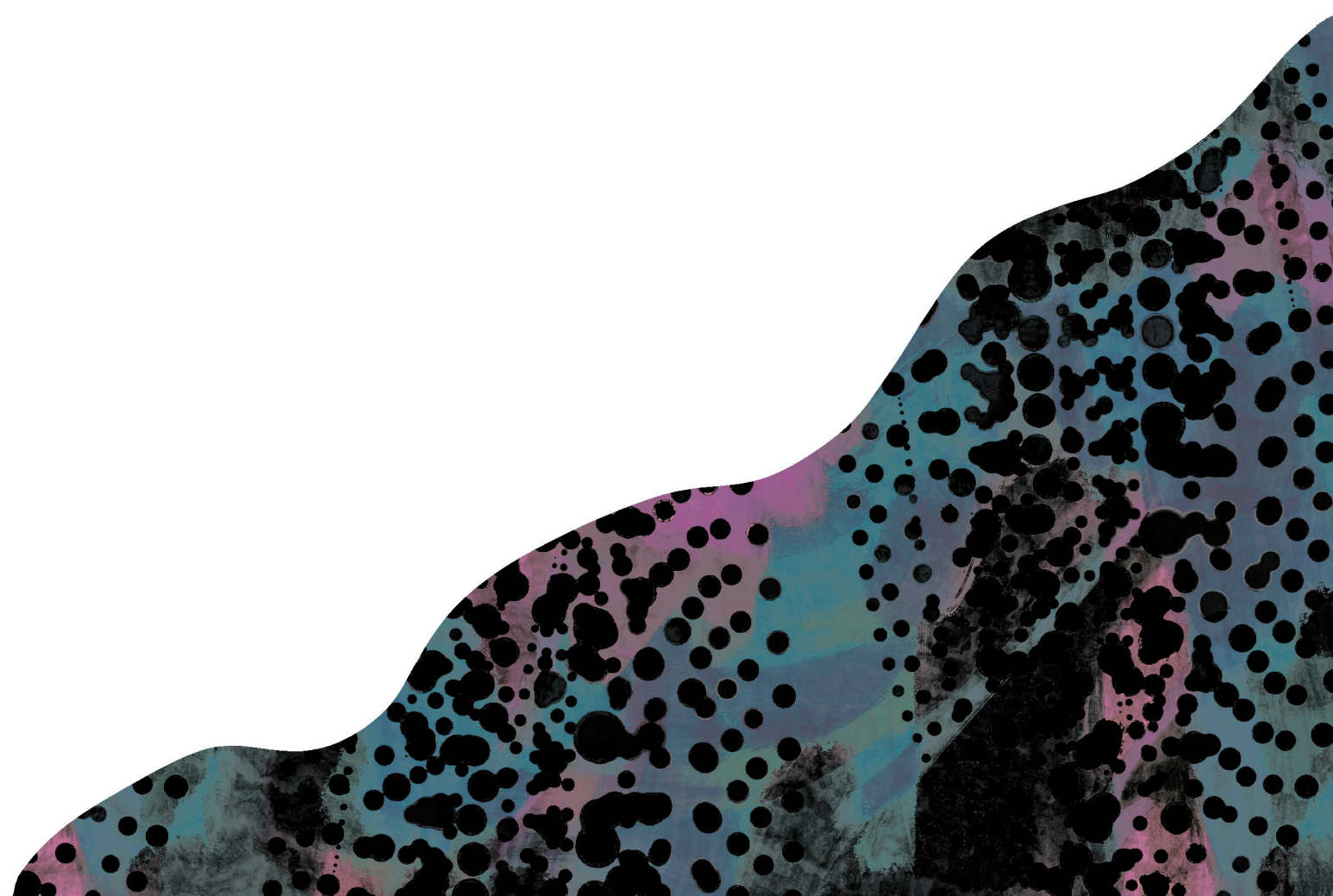
# Violet at the party

A-W  
23-24





We complemented the dark shades with warm midtones for a sophisticated and moody palette. This story has a mystical Quality, offering the contrast of deep tones and warm accents, taking inspiration from nightfalls. Seasonless, artistic prints and relaxing designs bring the serenade of the sunset to fabrics.







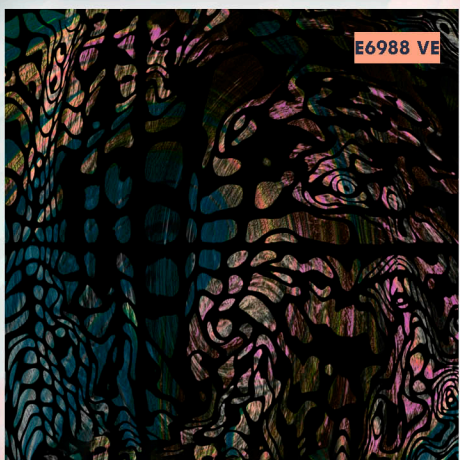
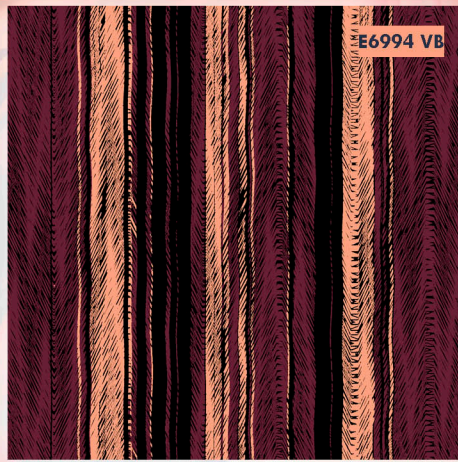
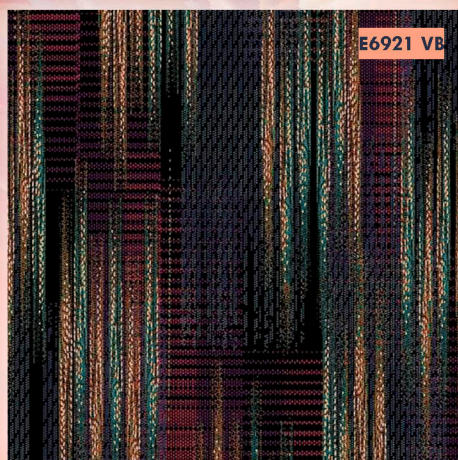
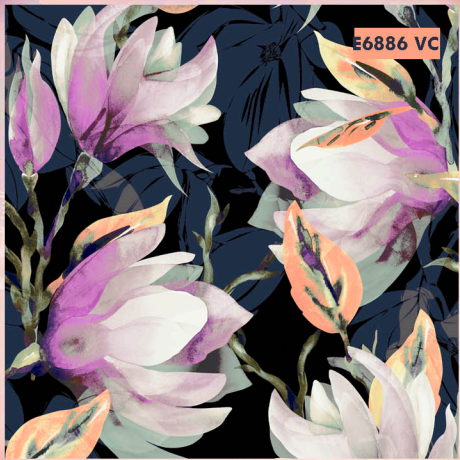
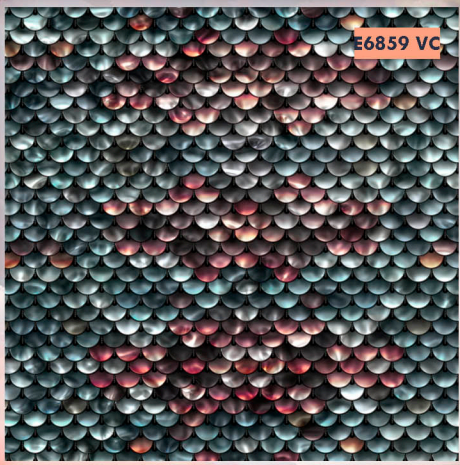
# Aubade time



A-W  
23-24

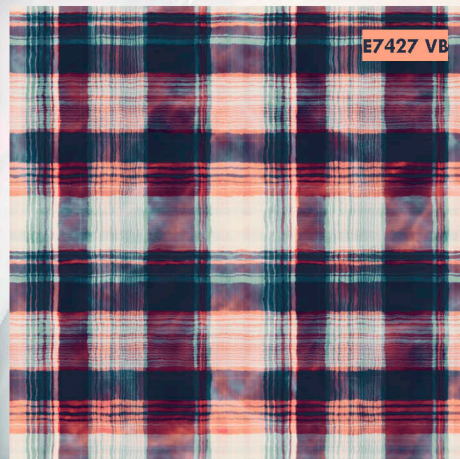
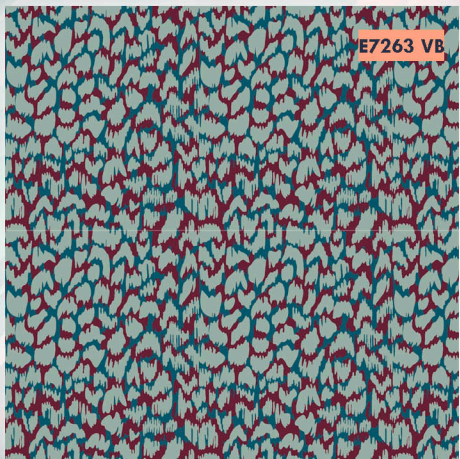
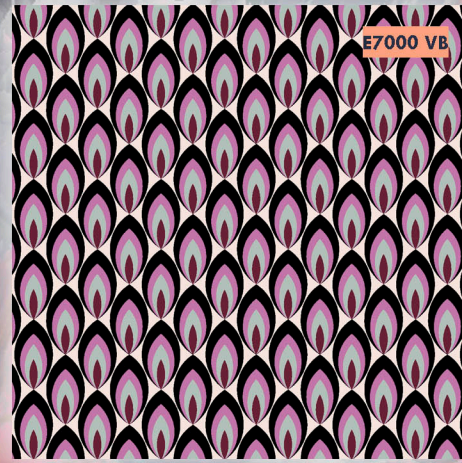


Aubade time



A-W  
23-24






# Aubade time

A-W  
23-24





In this story we are inspired by the new space age and the evolution of metaverse by keeping the intense and dynamic cobalt blue in the lead role.

This striking and impactful blue, motives evoking pre-Columbian civilizations, the evolution of the metaverse and dynamic images that connect to a new era of space exploration. You can evaluate this story across multiple product categories, associate it with escapism.





# Escapist Blue

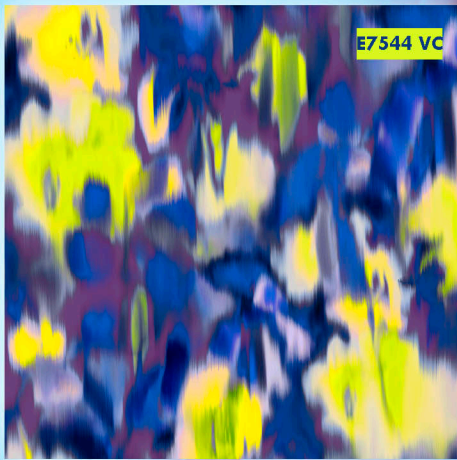


A-W  
23-24





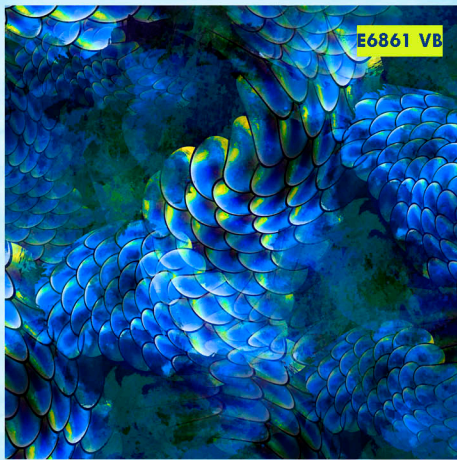
E6848 VB



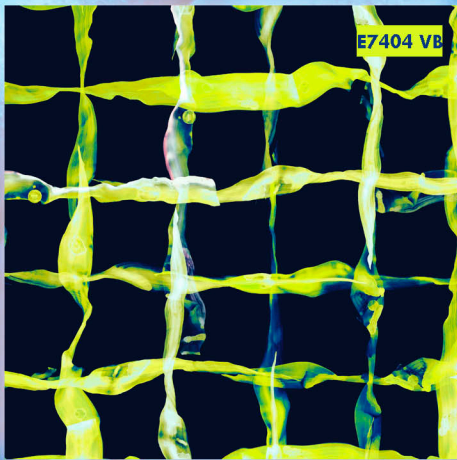
E7544 VC



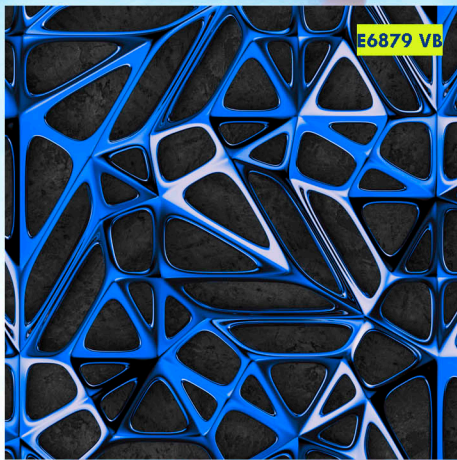
E7028 VB



E6861 VB



E7404 VB



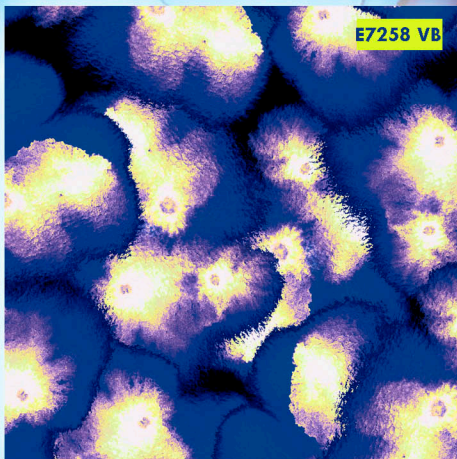
E6879 VB



E6930 VC



E6863 VB



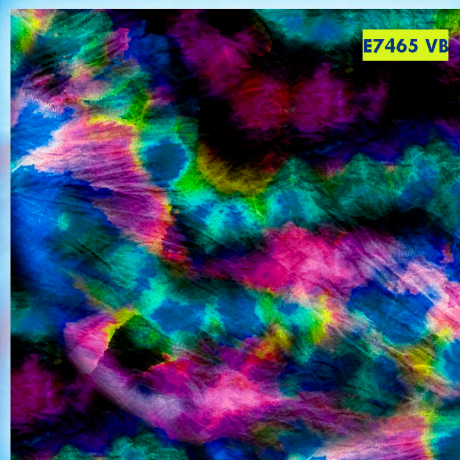
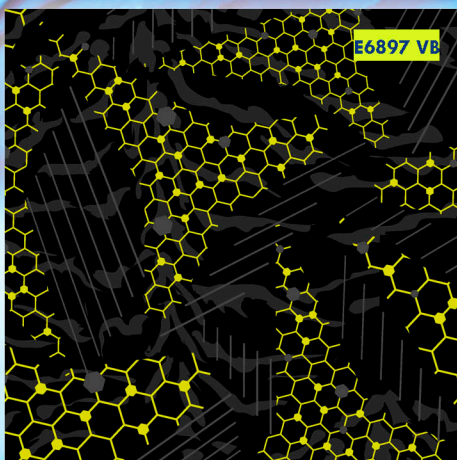
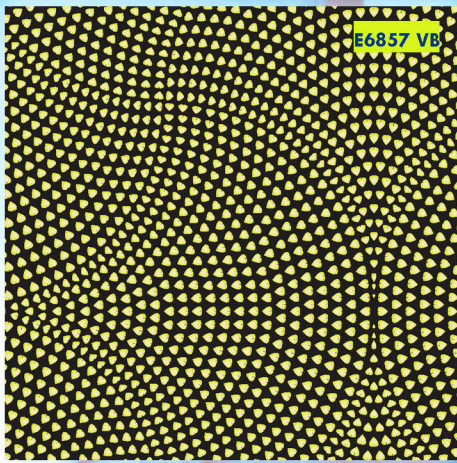
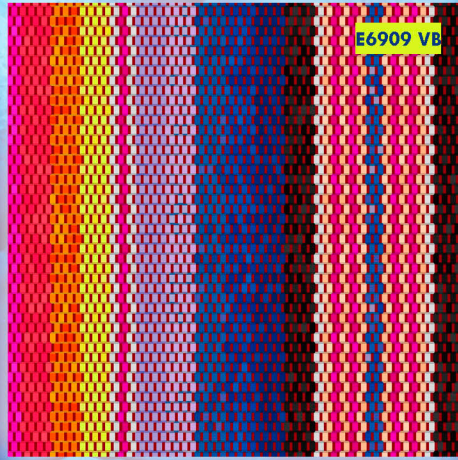
E7258 VB



# Escapist Blue

A-W  
23-24






# Escapist Blue

A-W  
23-24





The core tone, malachite, aligns to our changing new perception of nature. We emphasized the richness of nature by combining the depth and richness of this jewellery tone with a quieter and settling sage green. With hypnotic design patterns, and calming neutrals, we offer the benefits of connection with nature by using responsibly sourced fabrics.





Admiration for nature



A-W  
23-24





E6844 VB



E6887 VB



E6955 VB



E6845 VB



E7007 VB



E7401 VB



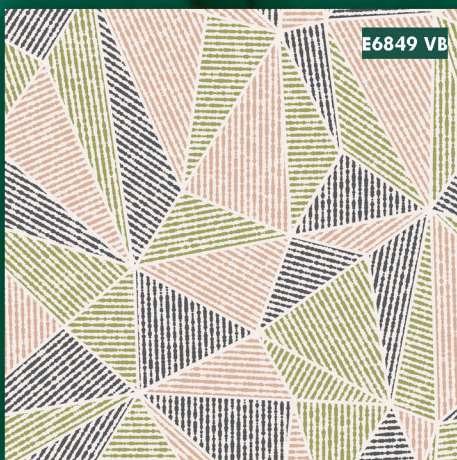
E6900 VB



E6950 VB



E7435 VB



E6849 VB



E7005 VB



E7350 VA



Admiration for nature

A-W  
23-24





E6868 VB



E6993 VB



E7467 VB



E6954 VB



E6999 VB



E6980 VD



E6957 VB



E7001 VC



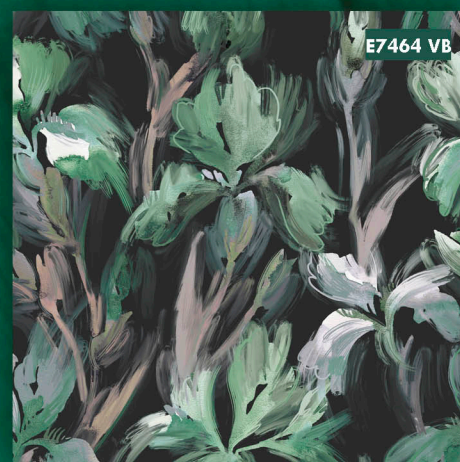
E6929 VB



E6960 VC



E7459 VB




E7464 VB

# Admiration for nature

A-W  
23-24



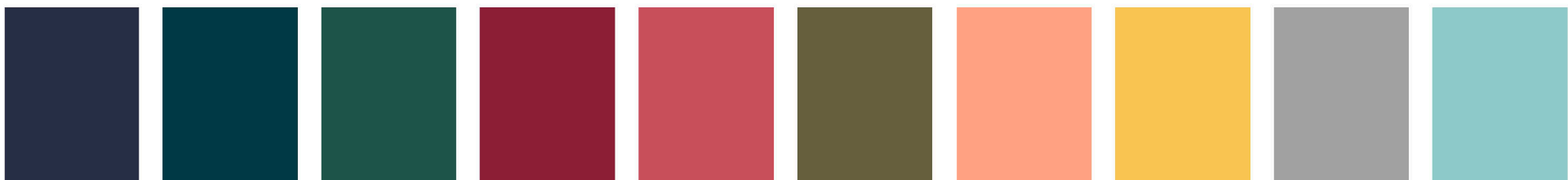
The image features abstract, organic shapes in dark blue, orange, and green. The top-left shape is a dark blue, wavy form containing a textured orange area with horizontal brushstrokes and a green area with a floral pattern. The bottom-right shape is a dark blue, wavy form containing a textured orange area with horizontal brushstrokes and a green area with a floral pattern. The background is white.

We refresh our priorities after a challenging period , and engage nature and home-comfort.  
The seasonal key colour, Astro Dust, is harmonised with traditional outdoor colours.  
We place nature at the center of our lives with camouflage images,  
footprints in nature and calming textural surfaces.





Men's collection  
Suitable for every occasion



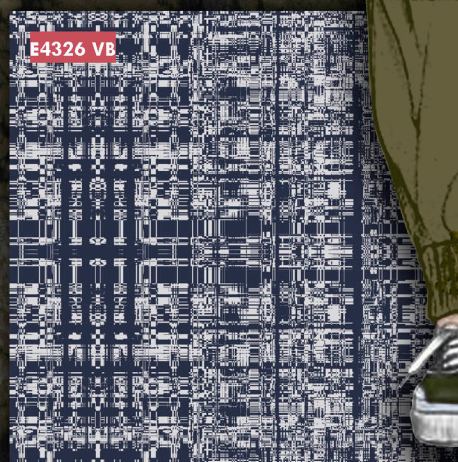
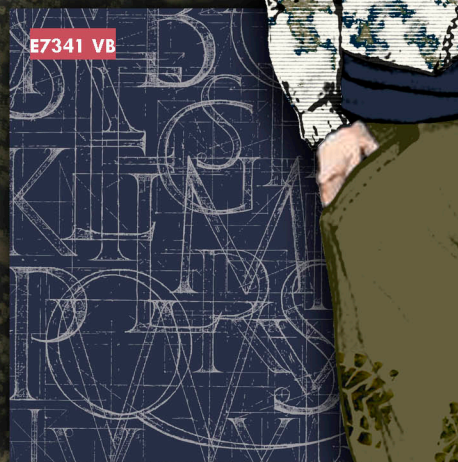
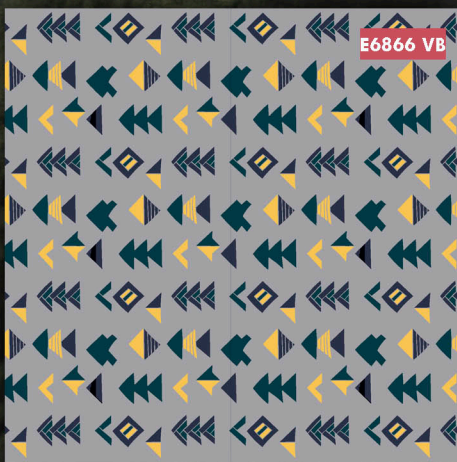
A-W  
23-24



# Men's collection

Suitable for every occasion

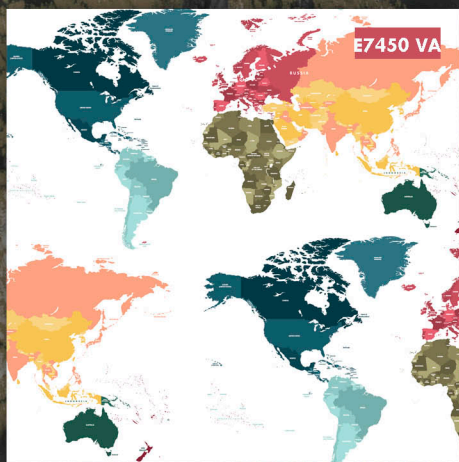
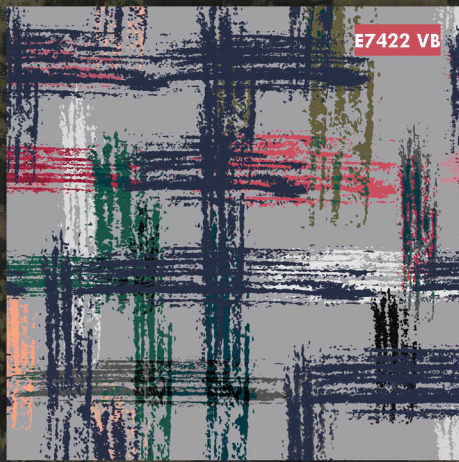
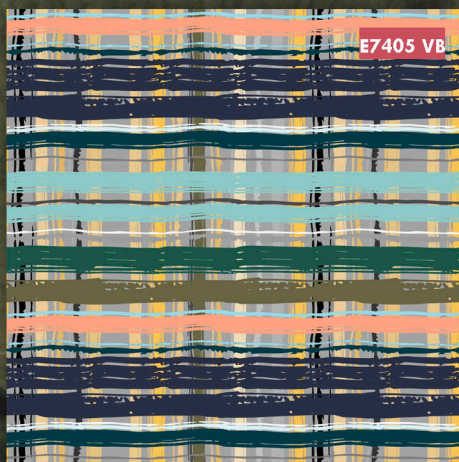
A-W  
23-24





# Men's collection

Suitable for every occasion



A-W  
23-24





We keep up with the energy of children as well as their comfort with mindful pastels, digitally infused wellness colours.

We reboost the importance of organic sustainable fabrics with designs ranging from digital to basic looks.







# Children Collection

Soft and the creative world

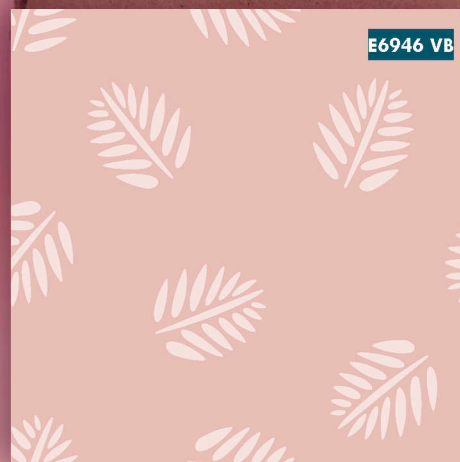
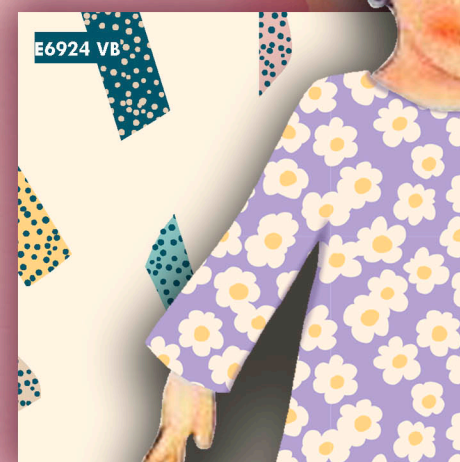
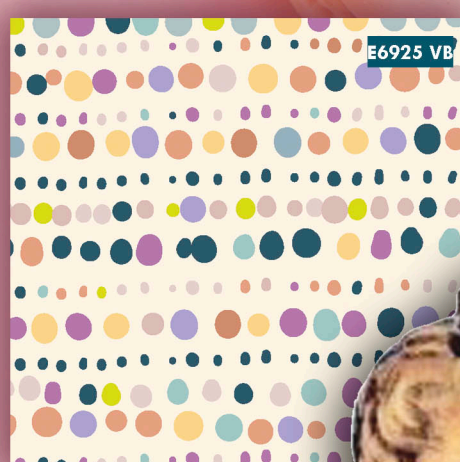


A-W  
23-24



# Children Collection

Soft and the creative world

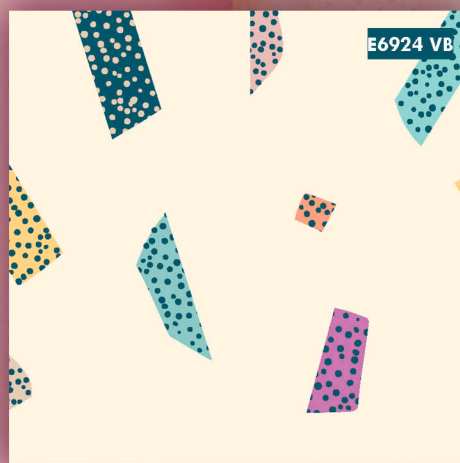


A-W  
23-24



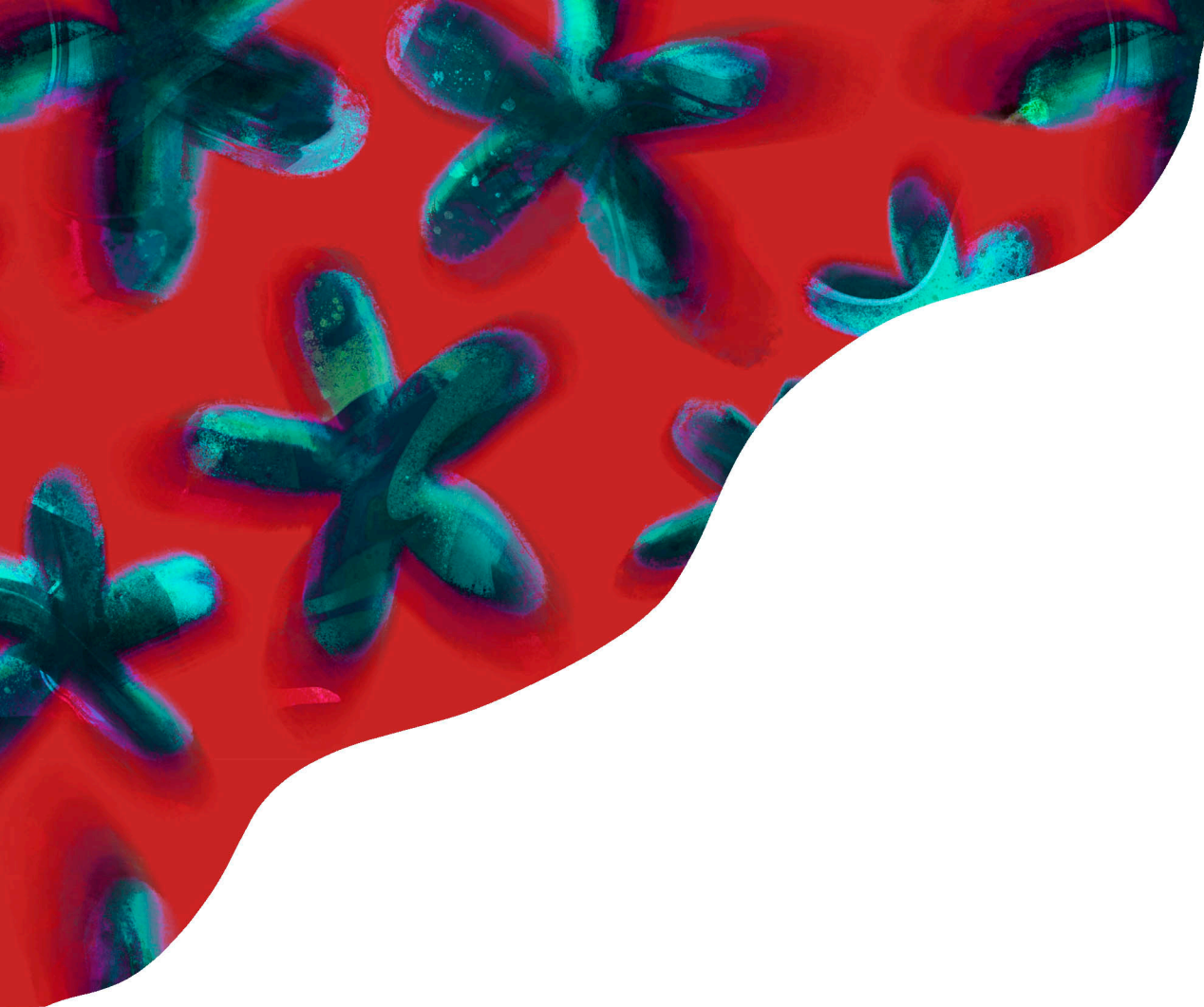
# Children Collection

Soft and the creative world

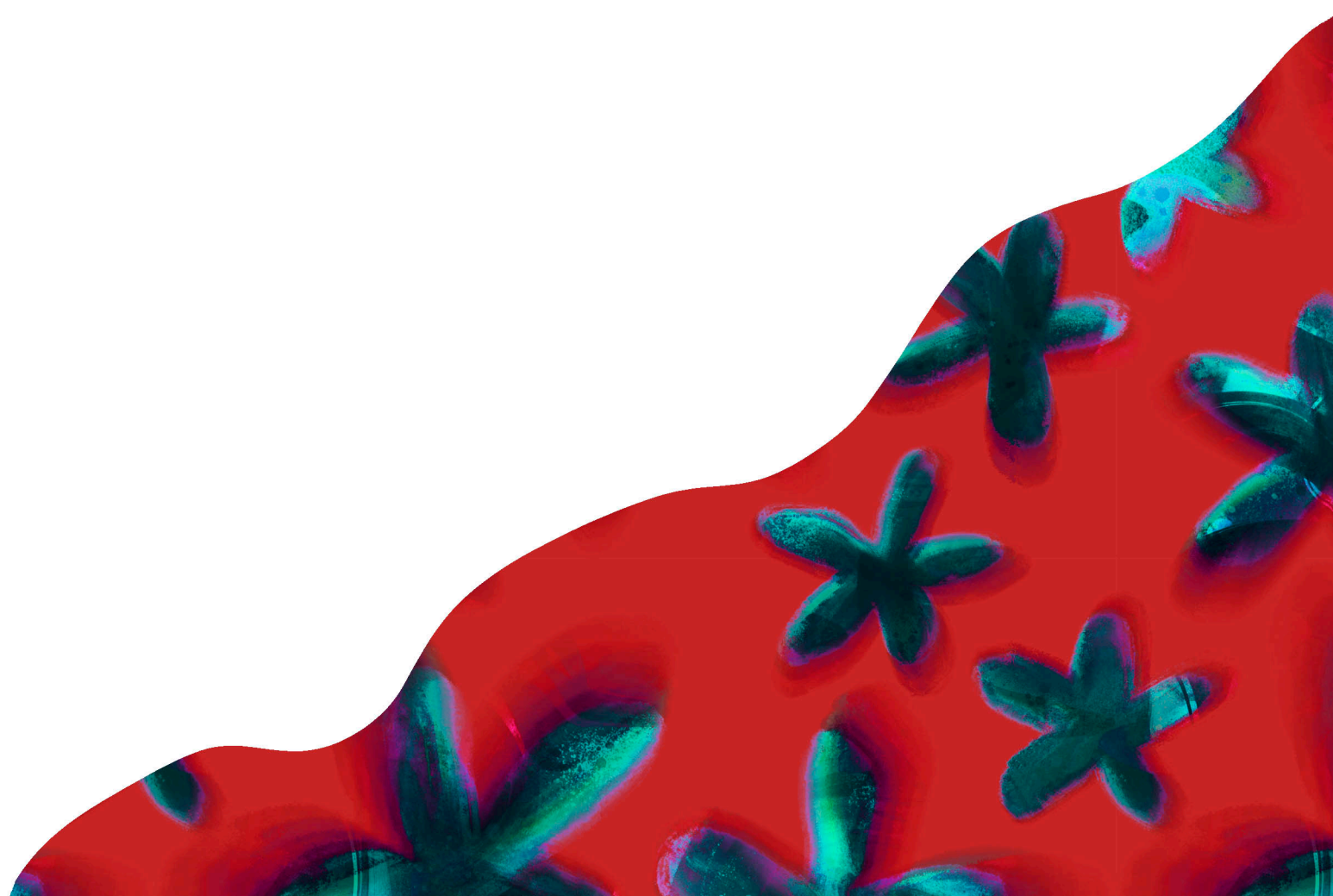


A-W  
23-24





Inspired by bioluminescent plants, ocean themes and the sea creatures...  
We support children's curiosity and energy as always with balancing dark and neon tones on organic Fabrics.







# Children's Collection

with sea creatures

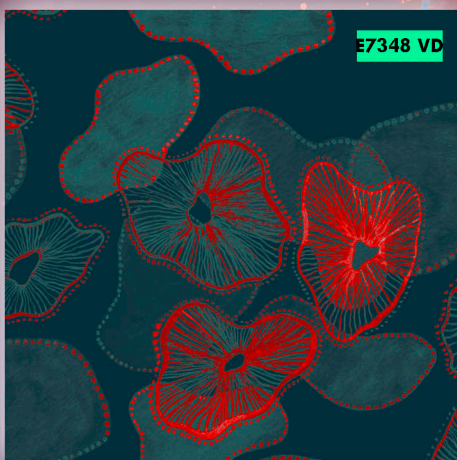
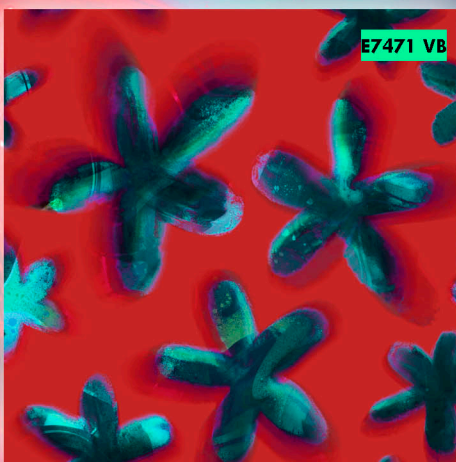
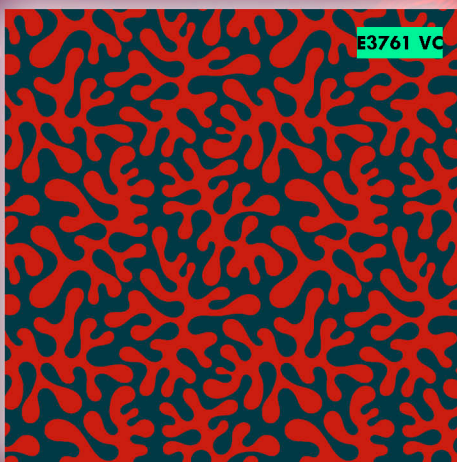


A-W  
23-24



# Children Collection

with sea creatures

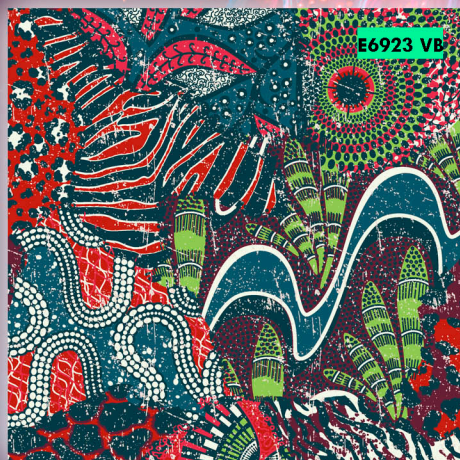


A-W  
23-24



# Children Collection

with sea creatures



A-W  
23-24